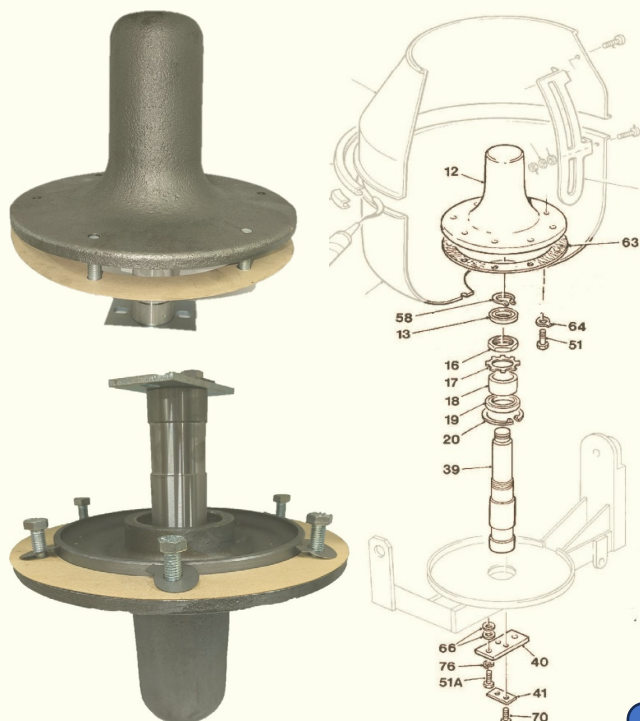
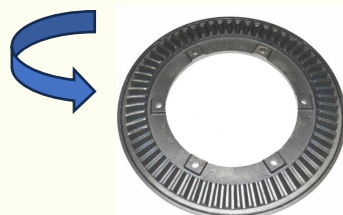


To save your workshop time and money, we are pleased to offer the below sub-assemblies, all built & tested on our production line in Bolton, UK. Simply make a note of the part number you need and click [here](#) to enquire.



Drum Centre Assembly Precision machined "Top Hat" casting with fully dressed shaft. Supplied with new gasket and all necessary fixings & fasteners. Simply remove old assembly and fix in-place.

Quote part number **V603699**. Suitable for all 100T, 150T and 175T Mixers. Please specify if you require the drum drive gear to be included as well



Enquire Now

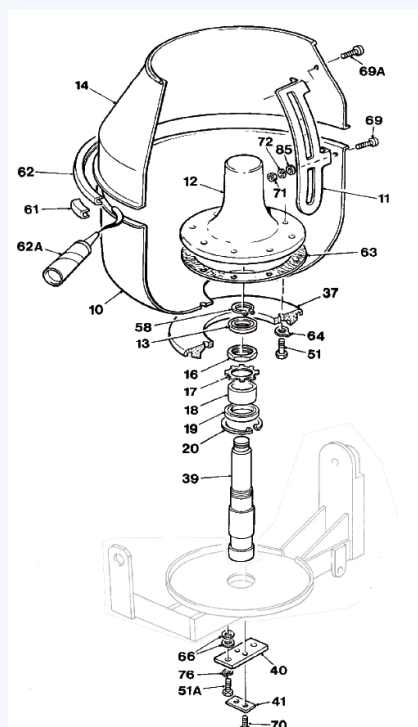
Drum Assembly Complete new mixing drum with blades, centre casting arrangement and drive gear.

Please quote following part numbers and state preference on primer/gloss finish :

100T – **V603696**

150T – **V603953**

175T – **V603948**



To save you time and money, we are pleased to offer the below sub-assemblies, all built & tested on our production line in Bolton, UK. Simply make a note of the part number you need and click [here](#) to enquire.



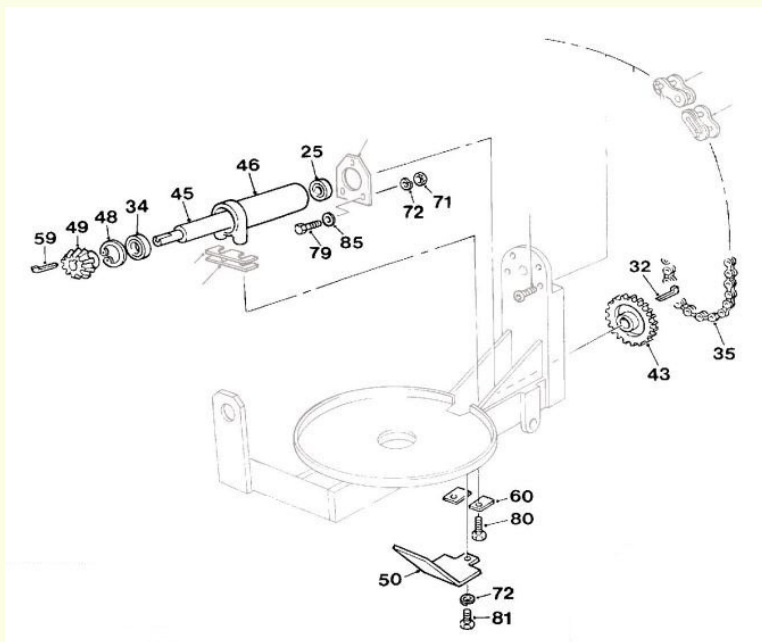
Drum Drive Assembly

(Lower) New drive pinion with fully dressed shaft, cast housing, sprocket & chain.

Please quote following part numbers :

100T – **V603698**

150T & 175T – **V603955**



[Enquire Now](#)

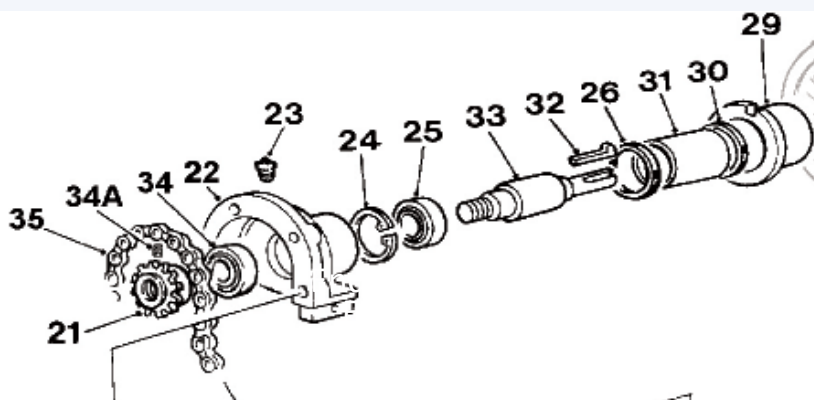
Top Drive Assembly

Complete Countershaft, journal casting, sprocket & chain.

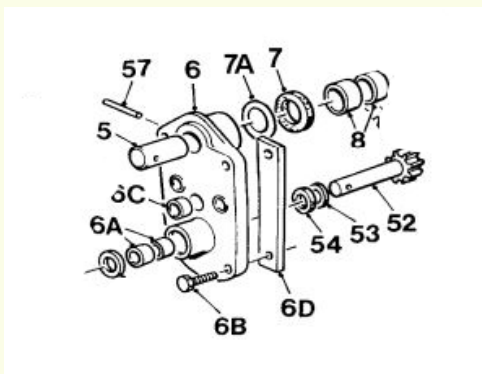
Please quote following part numbers :

100T – **V603697**

150T & 175T – **V603956**



To save you time and money, we are pleased to offer the below sub-assemblies, all built & tested on our production line in Bolton, UK. Simply make a note of the part number you need and click [here](#) to enquire.



Tilting Pinion Assembly for Handwheel Complete castings assembly with pinion, stub pin and all bushes and bearings (fully lubricated).

Please quote **V603957**. Suitable for all 100T, 150T & 175T Mixers

Enquire Now



Filter & Belt Service Kit Genuine Yanmar Air, Fuel & Oil Filters + Original Drive Belt.

Please quote following part numbers :
100T – **V603700**
150T & 175T – **V603958**